

Environmental Consortium for Leadership Development (EcoLeaD)

**Multi-Stakeholder Partnership for
Environmental Human Resource Development**

April 9, 2010

Miki Nishimura



Ministry of the Environment
Government of Japan

<http://www.eco-lead.jp>

Outlines

1. Structure and Objectives of EcoLeaD

2. Targets and Projects

2-1 Providing opportunities for Consortium members to meet and communicate with each other

2-2 T-Shaped Environmental Leadership Development Program

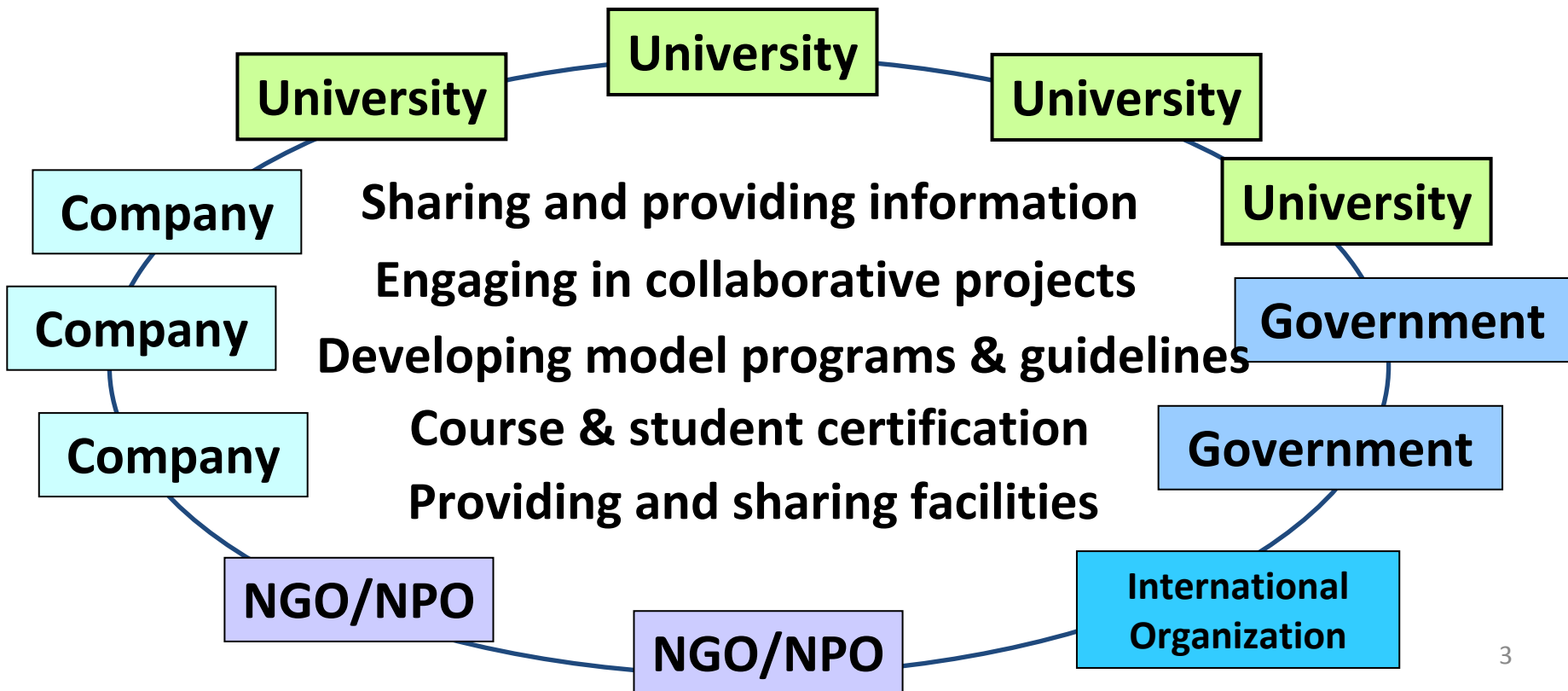
2-3 Green MBA/MOT Program on Environmental Management

2-4 Information Infrastructure for Environmental Leadership Development

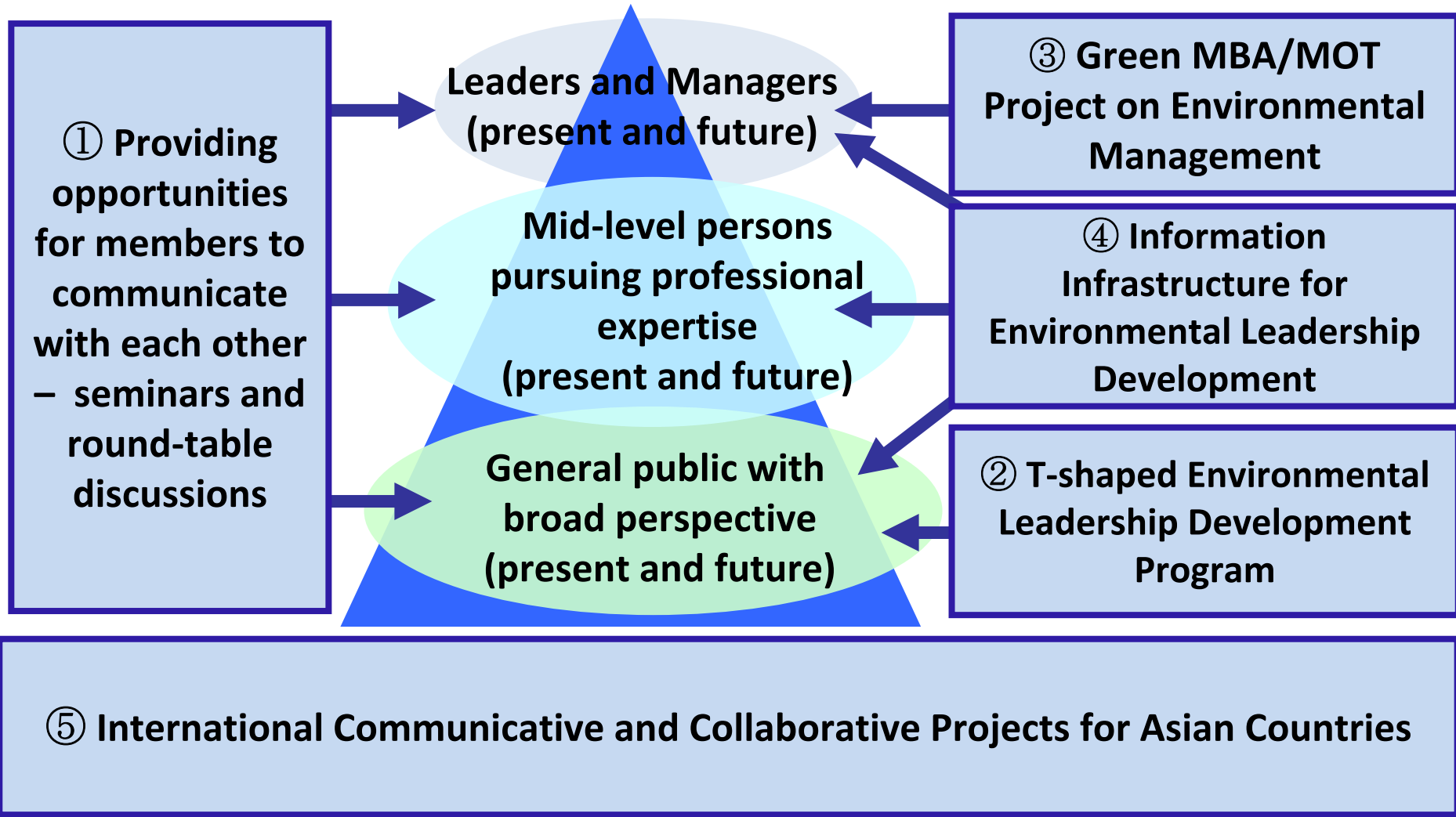
2-5 International Communicative and Collaborative Projects for Asian Countries

1. Structure & Objectives

**Reinforcement of environmental human resource development through a multi-stakeholder platform
(Government/Industry/University/NGO·NPO)**



2. Targets and Projects



2-1. Seminars & Round-table Discussions

Topic 1: Good practices of environmental human resource development

Topic 2: Requisites for environmental leaders who can devise company growth strategy

Seminars and Symposium with Roundtable Discussion

Sharing good practices by universities and companies

Discussion under the relevant theme

Discussion for further collaboration

2-2. T-shaped Environmental Leadership Development Program

Background

While there are many universities that have programs related to environmental studies, they are developed within the university under certain conditions and restrictions

↓
There is no standard guideline for the syllabus development for “Environmental Studies”

Establishment of T-shaped environmental leadership development programs:

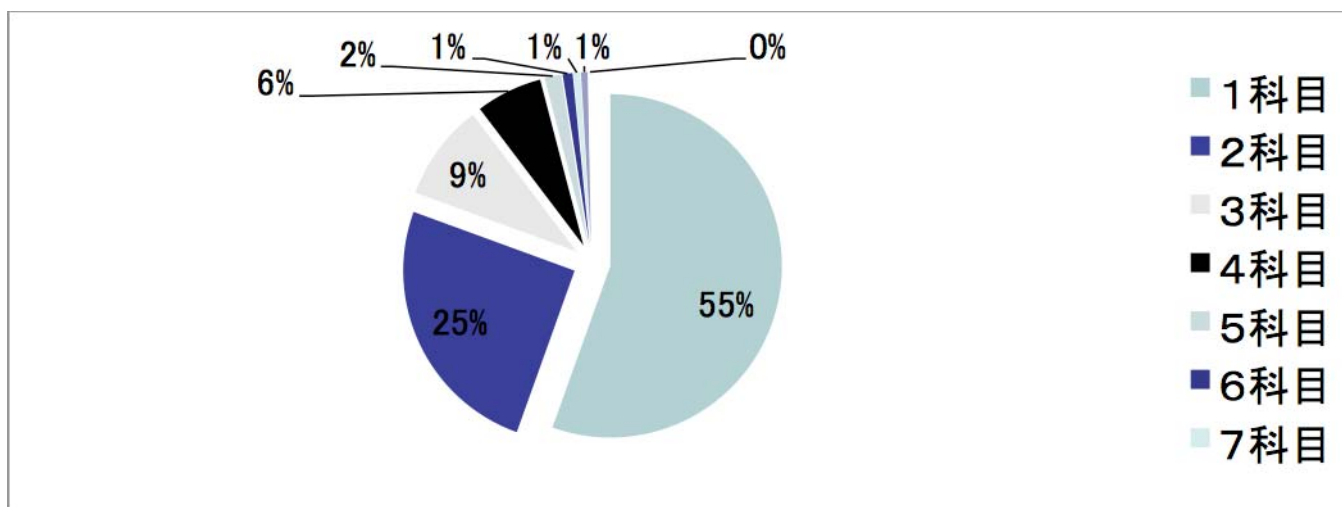
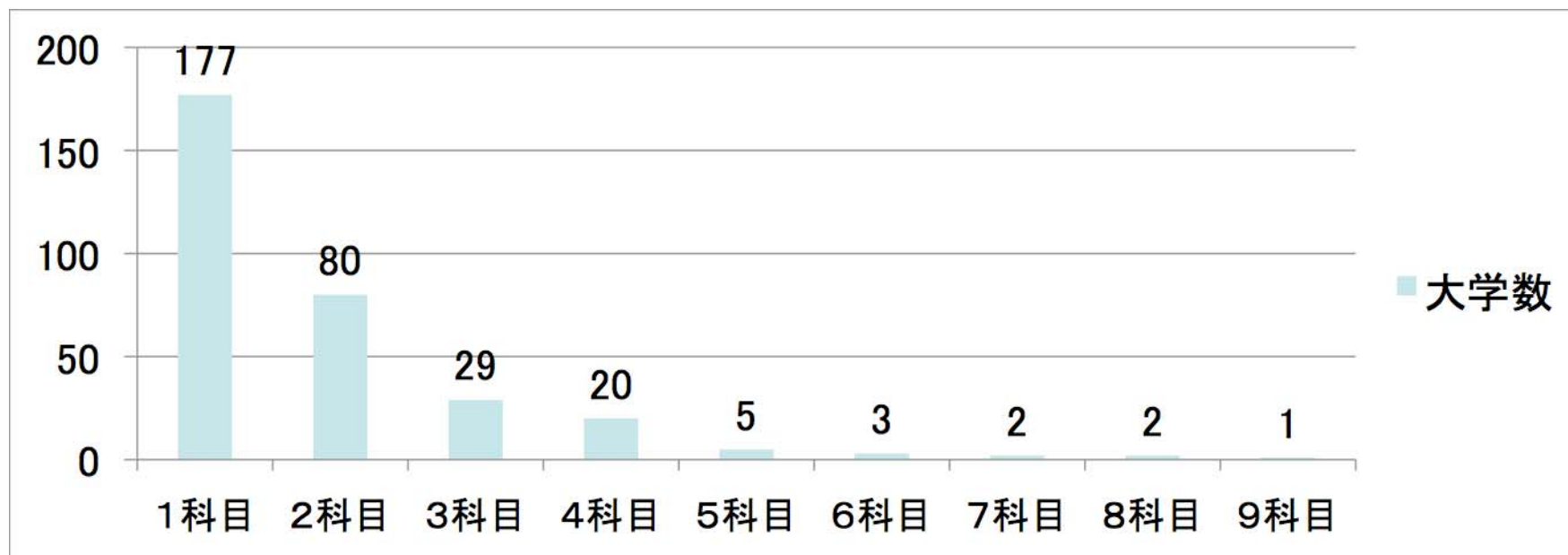
- Review current programmes in Japan and overseas
- Research on current practices, challenges and effective methods of practical education for environmental study.

Utilization at domestic universities

Utilization for practical education in industry, administration, etc.

Selective utilization for education in Asia

Undergraduate Programs Offering Environmental Studies Courses (Total: 319 Schools)



T-shaped Environmental Leadership Development Program: Contents

Basic ① Introduction: What are Environmental Issues?

Human History, Environmental Issues and Measures

Basic ② Global System & Eco-System

Basic ③ Human History & Environmental Issues

Basic ④ Resources and Global Capacity

Basic ⑤ History of Environmental Measures

Topics of Environmental Issues and Measures

Ref ① Global Warming & Energy

Ref ④ Waste Management & Recycling

Ref ② Air Pollution

Ref ⑤ Chemical Pollutant Contamination

Ref ③ Water Pollution & Soil
Pollution

Ref ⑥ Biodiversity & Deforestation

Approaches to Resolve Environmental Issues

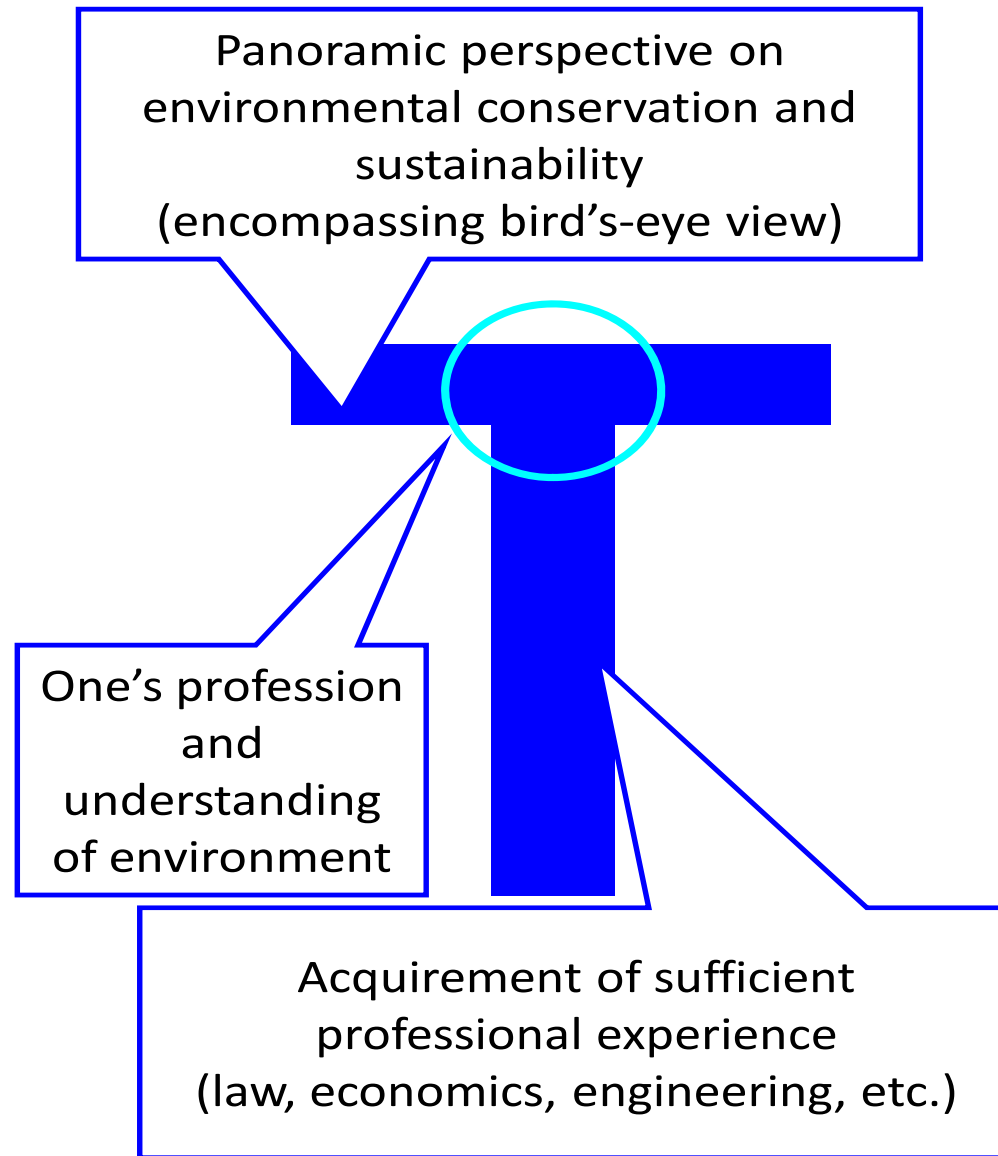
Basic ⑥ Approaches of Central and Local Government

Basic ⑦ Approaches of Companies

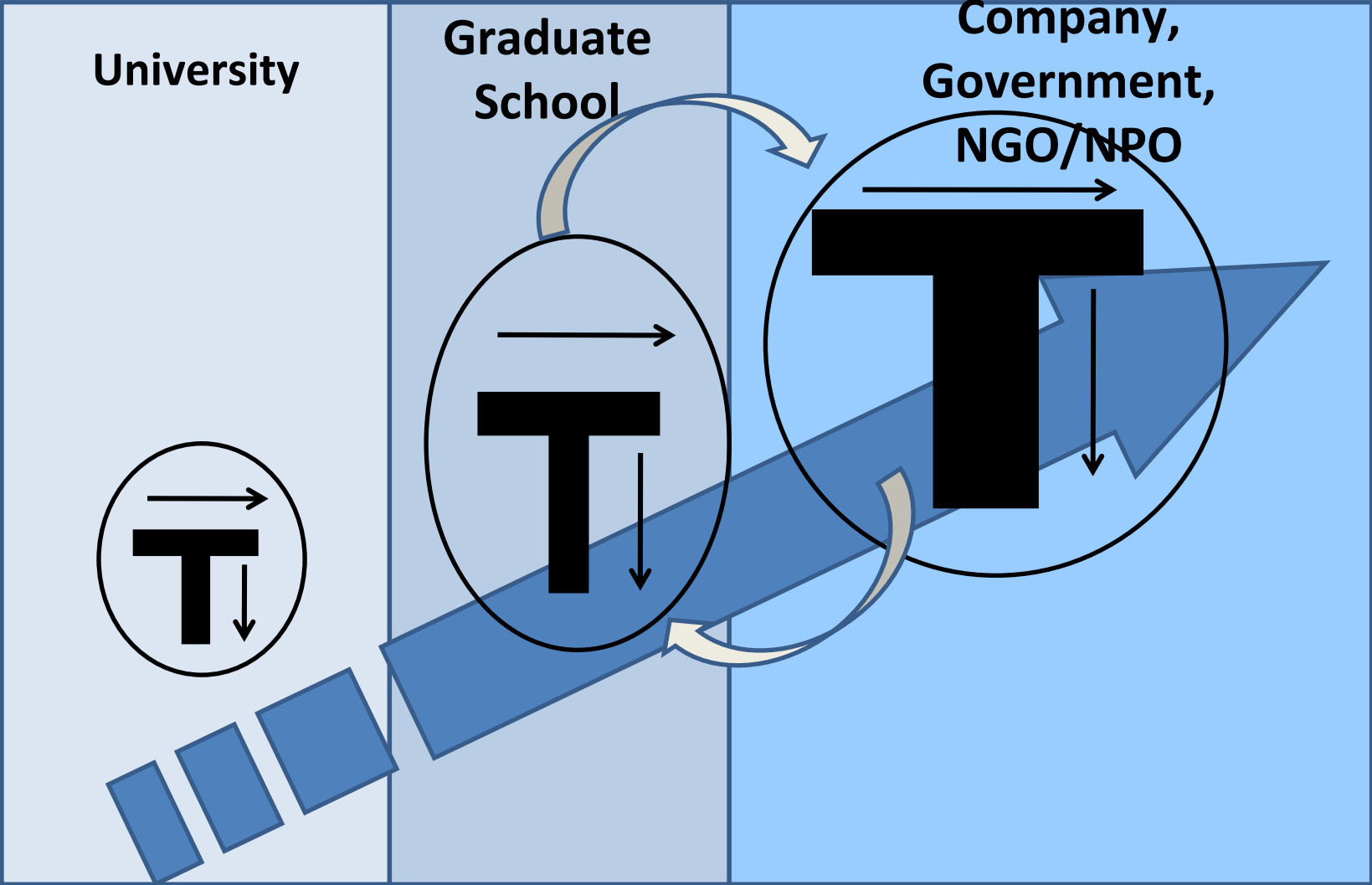
Basic ⑧ Partnership for Advancing Sustainable Society

Basic ⑨ Conclusion: Toward Sustainable Society

What is T-shaped Environmental Leadership?



Developmental Stages of T-shaped Environmental Leadership



2-3. Green MBA/MOT Project on Environmental Management

Background

There is no good MBA programs incorporating Sustainability in Japan.

↓
People will study abroad to receive the education

↓
MBA programs incorporating sustainability which would suit to Asian Culture shall be developed

Green MBA/MOT Project on Environmental Management

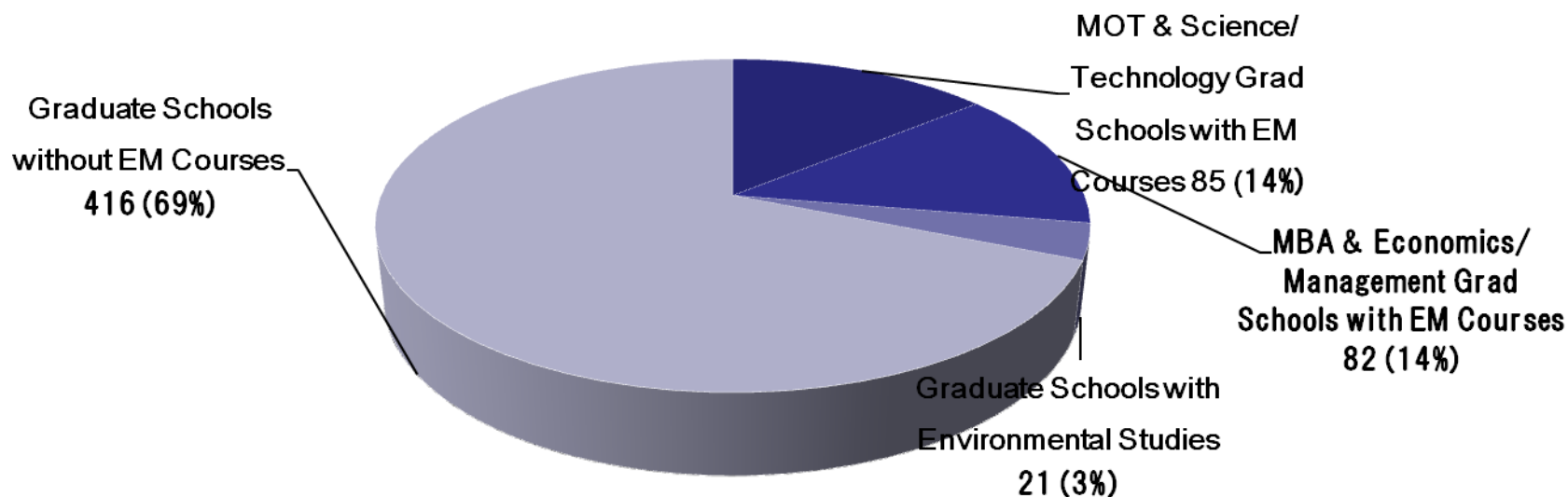
- Review of the current status and educational materials of “green” MBA/MOT and environmental management programmes in Japan and overseas.
- Research and deliberation on current practices, challenges and effective methods of practical education for environmental management and management-related subjects

↙
Publication,
development of
curriculum practice

↓
Application for Green
MBA/MOT certification

↘
Conferment of
Environmental
Management Leader
certification

Environmental Management Courses in Graduate Schools



69% of graduate schools without Environmental Management (EM)-related courses.

Few EM courses per school.

Limited indication of systematic EM program development.



More graduate programs should offer EM courses so that leaders in various fields of the society will have systematic knowledge of environment and skills of Environmental Management.

Green Management Program Guidelines (2009 Draft Version)

GMP

A Masters Minor Program to Advance Environmental Management in Business

To develop **environmental leaders** at graduate schools including MBA/MOT, who can

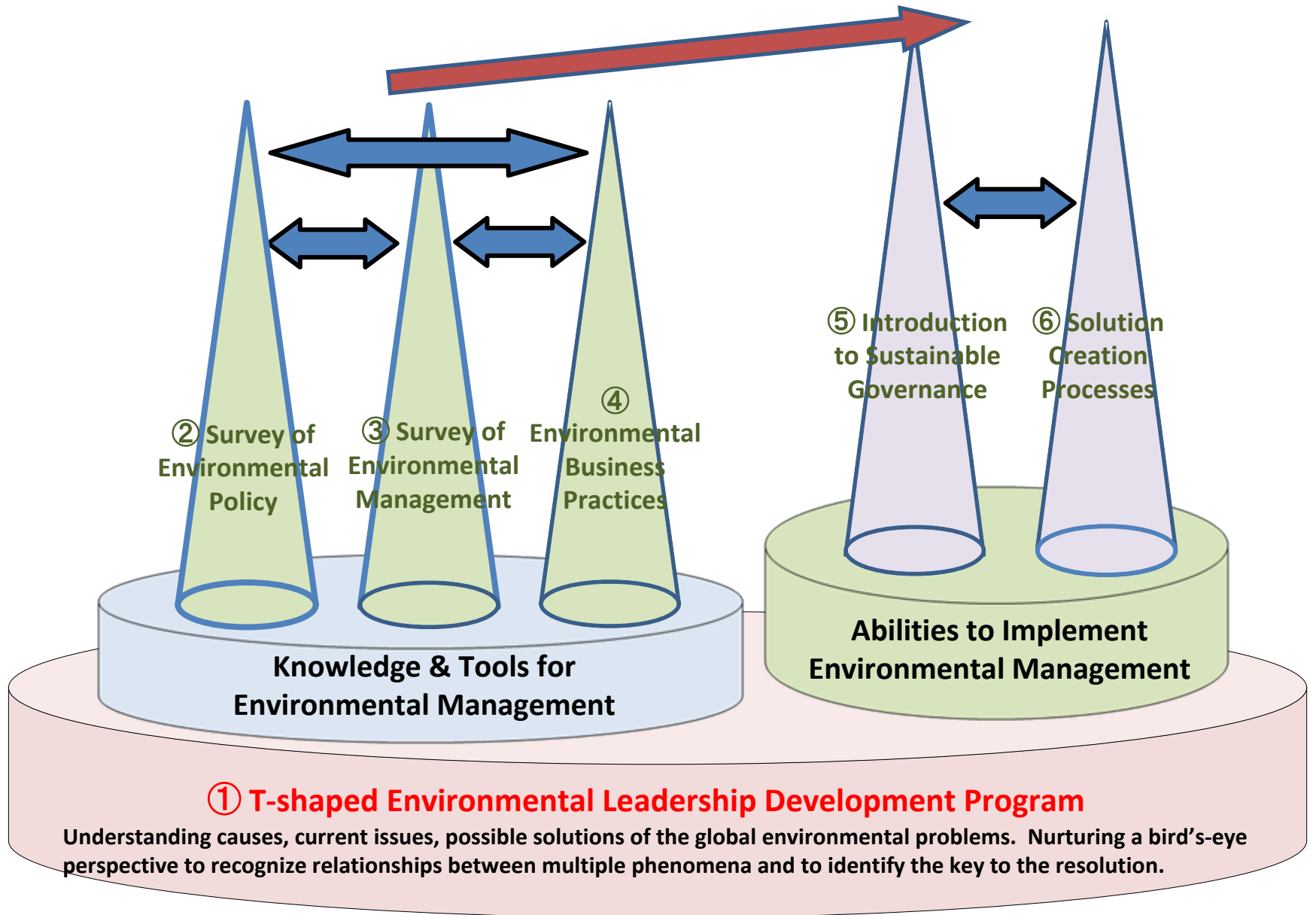
- Implement the compliance side of environmental management.
- Lead environment-related growth strategies.

Masters Minor Program (6 courses)

- As integral part of graduate education in addition to the Major program
- Systematic understanding of environmental issues and environmental management
- A birds-eye perspective to identify the key issue of a complex environmental problem to find a possible resolution
- Ability to apply various tools of environmental management

(2009 Guidelines Draft include the program outlines, structure, and overview of each course.)

GMP: Course Structure



Topics include the following:

① **T-shaped Environmental Leadership Development Program**

Understanding causes, current issues, possible solutions of the global environmental problems. Nurturing a bird's-eye perspective to recognize relationships between multiple phenomena and to identify the key to the resolution.

② **Survey of Environmental Policy**

the Basic Environmental Plan, the Basic Law for Building the Zero-Waste Society, the Strategy for an Environmental Nation in the 21st Century, the Strategy for Biodiversity, Frameworks of Environmental Policy and Policy Mix, Environmental Laws, Global Environmental Treaties, the Global Compact

③ **Survey of Environmental Management**

ISO14001 Series, ISO14001, Eco-Action 21, Environmental Accounting, Environmental Reporting, Environmental Performance Indicator

④ **Environmental Business Practices**

Life Cycle Assessment, Environmental Label, Carbon Footprint, Ecological Rucksack, Green Purchasing, Intellectual Property Management, Project Management

⑤ **Introduction to Sustainable Governance**

Environmental Communication, Environmental Ethics, CSR, Transparency & Materiality, the Global Compact

⑥ **Solution Creation Processes**

Analytical Thinking, System Thinking, Sustainable Solution, Simulation Training

2-4. Information Infrastructure for Environmental Leadership Development

- **Construction of information infrastructure for environmental leadership development.**
- **Establishment of curriculum database for environmental leadership development.**



- **Course materials including syllabus, lecture notes, cases, activities, and teaching methods**
- **Information on human resources and facilities**
- **Information on educational institutions and systems**
- **Information to support field work and internships**
- **Platform for discussion groups**

2-5. International Collaboration with Asian Countries

Cooperation with international networks, such as ProSPER.Net, in environmental leadership development, and consideration of possible collaborative projects.

EcoLeaD would like to invite International

Partners International partners of the preparatory congress can access the EcoLeaD website and obtain information from it.

- International partners would have links on the EcoLeaD website.
- International partners can dispatch relevant information on environmental leadership development through the EcoLeaD website.
- International partners can get involved in communication, cooperation and networking among EcoLeaD members from the government, academia, industry and civil sectors.

Member Universities of Environmental Consortium for Leadership Development

Hokkaido University	Seikei University	Shinshu University	Osaka University
Iwate University	Sophia University	University of Yamanashi	Osaka Prefecture University
Miyagi University of Education	Tokai University	Nagoya University	Okayama University
Tohoku University	Tokyo City University	Chubu University	Hiroshima University
Tohoku Bunka Gakuen University	Tokyo Gakugei University	University of Shiga Prefecture	Yamaguchi Prefectural University
Ibaraki University	University of Tokyo	Kyoto University	Kochi University
Chuo University	Waseda University	Kyoto Sangyo University	Fukuoka University
Keio University	Yokohama National University	Kyoto Women's University	Kagoshima University
Rikkyo University	Kanazawa University	Ritsumeikan University	Shiga University

Thank you for your attention.

For further information,
please contact:

Environmental Consortium for Leadership Development
Centre for Sustainability
Institute for Global Environmental Strategies
2-14-18-4F Shibuya, Shibuya-ku, Tokyo 150-0002, Japan
Tel: +81-3-6418-0375 (Direct) / +81-3-6418-0381 (Main)
Fax: +81-3-6418-0380
Email: info@eco-lead.jp